

**APPRENDRE  
UN  
STANDARD  
et le retenir**

TRAVAIL SUR LA TONALITÉ

ENTENDRE LES DEGRES

MEMORISER LE THEME

IMPROVISER AUTOUR DU THEME

TROUVER LES ACCORDS PAR RAPPORT A LA MELODIE

CONNAITRE LA LOGIQUE DES MARCHES HARMONIQUES

PENSER EN DEGRÉS

PRATIQUER LES ARPEGES OUVERTES

EDUQUER L'OREILLE ET PERCEVOIR LE CHANT INTERIEUR

**UT Bb Eb**

**12 PAGES**

**VIDEO DE 45 MN**

David Sauzay

# Apprendre et retenir un standards

David Sauzay

Apprentissage d'un morceau dans la tonalité de do

travail préparatoire sur la tonalité



Jouer les gammes majeures jusqu'à la 7ème

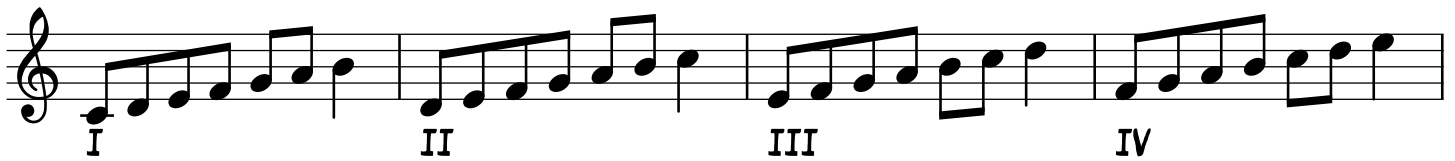
Sur une mesure



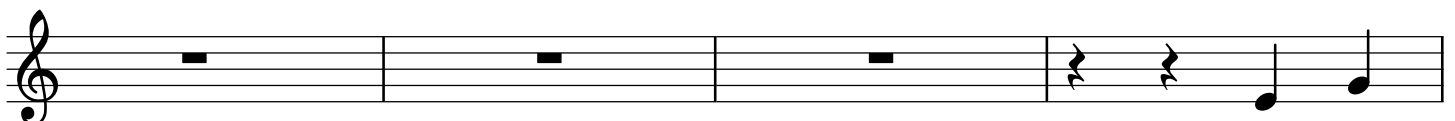
sur 2 mesures



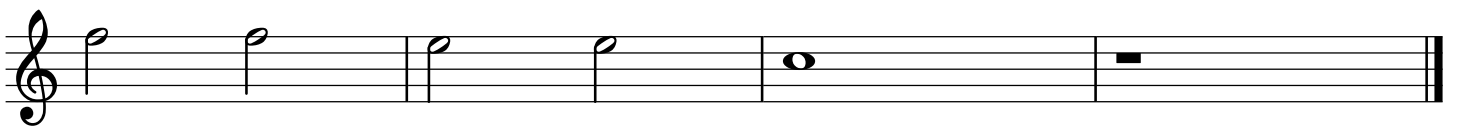
Entendre les degrés



toutes les étapes doivent être évidentes



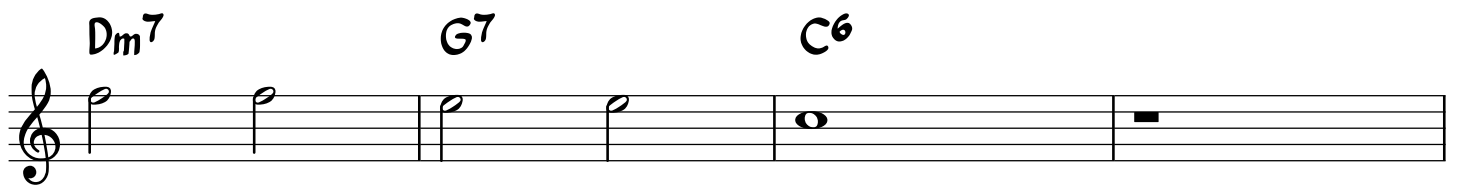
APPRENDRE LE THEME





C6 Dm

# DE MO



PENSER AU TIERCES, TONIQUE, QUINTE, SEPTIEME

C<sup>6</sup> C<sup>Δ</sup>

A musical staff in treble clef showing a sequence of notes: C4, E4, G4, F4, E4, C4. Above the staff, the chord C<sup>6</sup> is written above the first three notes (C, E, G) and the chord C<sup>Δ</sup> is written above the last three notes (F, E, C). The notes C, E, G, and C are beamed together, as are F, E, and C.

C<sup>6</sup> A<sup>7b9</sup> Dm

**DE**

**MO**

A large red rectangular box with a yellow border. Inside the box, the words "DE" and "MO" are written in large, bold, black capital letters. Above the box, the chords C<sup>6</sup>, A<sup>7b9</sup>, and Dm are written, corresponding to the notes in the box.

Dm<sup>7</sup> G<sup>7</sup> C<sup>6</sup>

A musical staff in treble clef showing a sequence of notes: D4, F4, A4, G4, F4, D4. Above the staff, the chord Dm<sup>7</sup> is written above the first two notes (D, F), the chord G<sup>7</sup> is written above the next two notes (A, G), and the chord C<sup>6</sup> is written above the last two notes (F, D). The notes D, F, A, G, and D are beamed together.

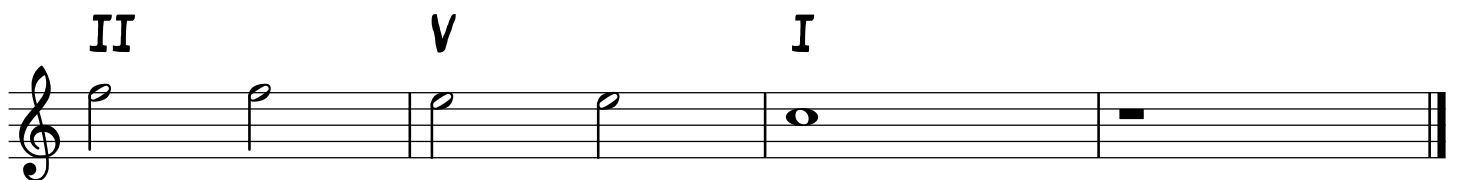
PENSER EN DEGRES



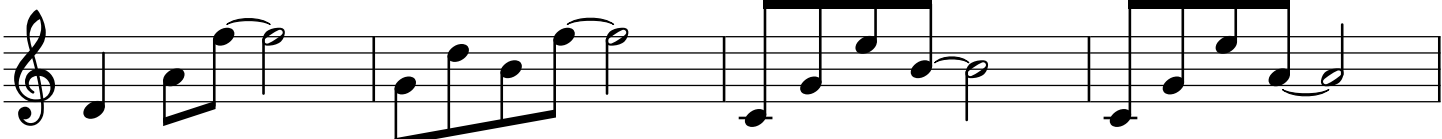
I VI7 II

DE  
MO

A large red rectangular box with a thin orange border. Inside the box, the words 'DE' and 'MO' are written in large, bold, black, sans-serif capital letters. Above the box, the chord symbols 'I', 'VI7', and 'II' are positioned above the first, second, and third measures of the staff below.



ARPEGES MELODIQUES



ARPEGES



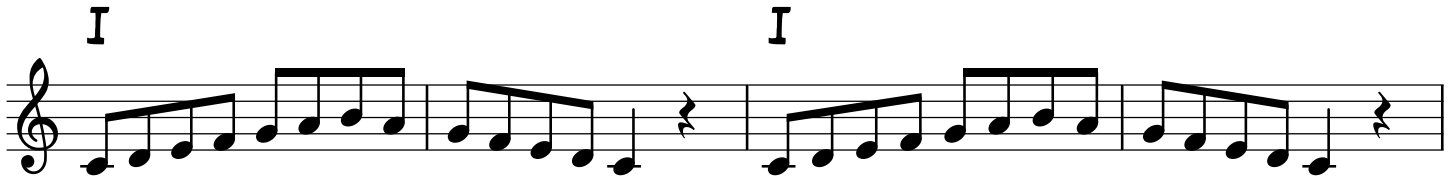
3<sup>re</sup>ce de A7

A large, solid orange rectangular area with a thin yellow border. The word "DEMO" is written in large, bold, black, sans-serif capital letters across the center of the rectangle. The letters "DE" are on the top line, and "MO" are on the bottom line.





LIER LES DEGRES ET LES PHRASES PRIMORDIALES



I

(V7b9)

(Im)

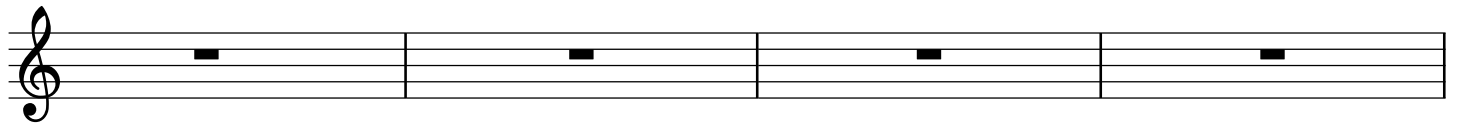
DE

MO



Suites d'accords fréquemment utilisées dans 90% des standards

Dm<sup>7</sup> G<sup>7</sup> C



C A<sup>7</sup> Dm G<sup>7</sup>

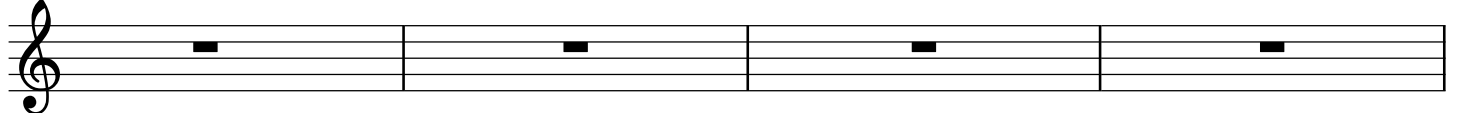


**DE**

**MO**

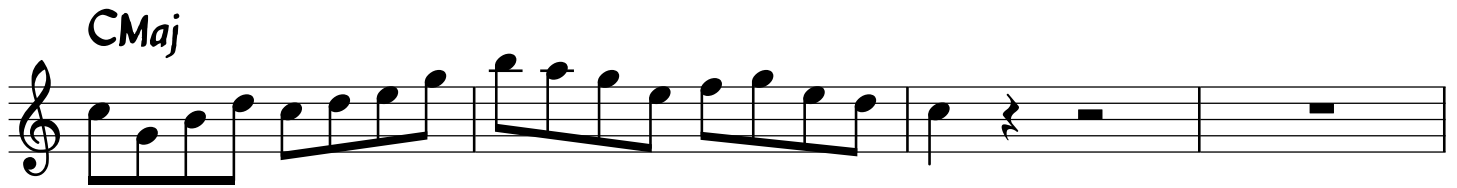


D<sup>7</sup> G<sup>7</sup>





EXEMPLE DE SOLO #1



DE

MO



SOLO #2

C6



A musical staff in treble clef containing a sequence of notes: C4 (with sharp), D4, E4, F4, G4, A4, B4, C5, B4, A4, G4, F4, E4, D4, C4. The notes are beamed in groups of four.

C6 C#° Dm Dm




A musical staff in treble clef containing notes: C4 (with sharp), D4, E4, F4, G4, A4, B4, C5, B4, A4, G4, F4, E4, D4, C4. The notes are beamed in groups of four.

DE

MO

G7 C6



A musical staff in treble clef containing notes: C4 (with sharp), D4, E4, F4, G4, A4, B4, C5, B4, A4, G4, F4, E4, D4, C4. The notes are beamed in groups of four.