

blues ex 1.2

David Sauzay

Exemple d'utilisation harmonique du module

Musical notation for the first part of the exercise, measures 1-12. The key signature is one flat (Bb) and the time signature is 4/4. The notes are: 1. C4, D4, E4, F4; 2. G4, A4, B4, C5; 3. D5, C5, B4, A4; 4. G4, F4, E4, D4; 5. C4, B3, A3, G3; 6. F3, E3, D3, C3; 7. B2, A2, G2, F2; 8. E2, D2, C2, B1; 9. A1, G1, F1, E1; 10. D1, C1, B0, A0; 11. G0, F0, E0, D0; 12. C0, B0, A0, G0.

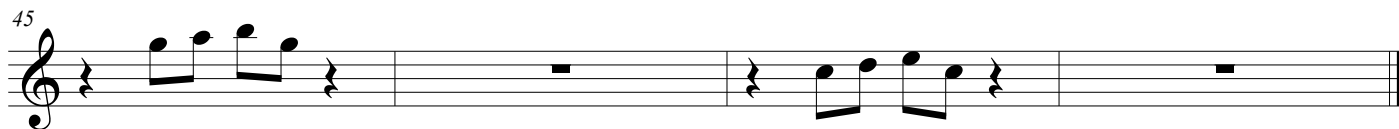
Chords indicated above the staff: C₇, F₇, C₇, F_{#7}, F₇, B₇, C₇, B₇, B_{b7}, A₇, A_{b7}, G₇, D_{b7}, C₇.

module avec impro et espace 2eme mesure /mise en valeur de la 7eme

Musical notation for the second part of the exercise, measures 13-24. The key signature is one flat (Bb) and the time signature is 4/4. The notes are: 13. C4, D4, E4, F4; 14. G4, A4, B4, C5; 15. D5, C5, B4, A4; 16. G4, F4, E4, D4; 17. C4, B3, A3, G3; 18. F3, E3, D3, C3; 19. B2, A2, G2, F2; 20. E2, D2, C2, B1; 21. A1, G1, F1, E1; 22. D1, C1, B0, A0; 23. G0, F0, E0, D0; 24. C0, B0, A0, G0.

Deplacement du module rythmiquement

Musical notation for the third part of the exercise, measures 25-36. The key signature is one flat (Bb) and the time signature is 4/4. The notes are: 25. C4, D4, E4, F4; 26. G4, A4, B4, C5; 27. D5, C5, B4, A4; 28. G4, F4, E4, D4; 29. C4, B3, A3, G3; 30. F3, E3, D3, C3; 31. B2, A2, G2, F2; 32. E2, D2, C2, B1; 33. A1, G1, F1, E1; 34. D1, C1, B0, A0; 35. G0, F0, E0, D0; 36. C0, B0, A0, G0.



2eme mesure tacet la premiere fois

